

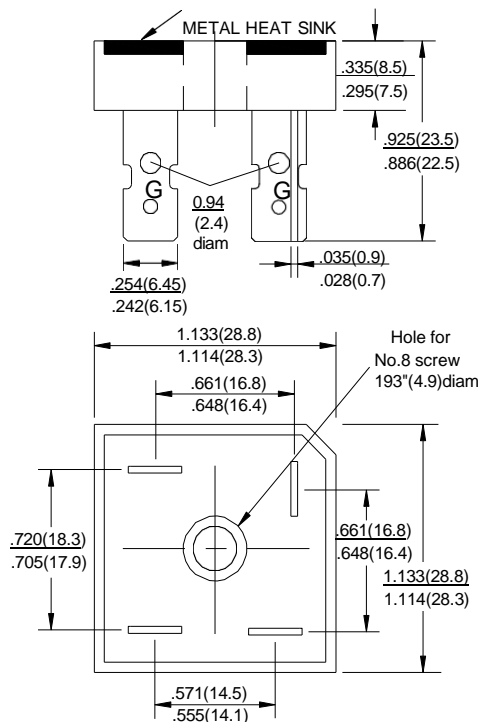


WEE Technology Company Limited

GLASS PASSIVATED BRIDGE RECTIFIERS

GBPC35005 THUR GBPC3510

REVERSE VOLTAGE - **50 to 1000**Volts
 FORWARD CURRENT - **35**Amperes



Dimensions in inches and (millimeters)

Package:GBPC

FEATURES

- Surge overload -400amperes peak
- Low forward voltage drop
- Mounting position :Any
- Electrically isolated base-2000 Vlots
- Solderable 0.25" FASTON terminals
- Materials used carries U/L recognition

MAXIMUM RATINGS AND ELECTRICAL CHARACTERISTICS

Rating at 25°C ambient temperature unless otherwise specified.

Single phase, half wave ,60Hz, resistive or inductive load.

For capacitive load, derate current by 20%

CHARACTERISTICS	SYMBOL	GBPC 35005	GBPC 3501	GBPC 3502	GBPC 3504	GBPC 3506	GBPC 3508	GBPC 3510	UNIT
Maximum Recurrent Peak Reverse Voltage	VRRM	50	100	200	400	600	800	1000	V
Maximum RMS Bridge Input Voltage	VRMS	35	70	140	280	420	560	700	v
Maximum Average Forward Rectified Output Current @ Tc=55°C	I(AV)	35							A
Peak Forward Surge Current 8.3ms Single Half Sine-Wave Super Imposed on Rated Load	IFSM	400							A
Maximum Forward Voltage Drop Per Element at 17.5A Peak	VF	1.1							V
Maximum Reverse Current at Rated DC Blocking Voltage Per Element @ TA=25°C	IR	10							uA
Operating Temperature Range	TJ	-55 to +150							°C
Storage Temperature Range	TSTG	-55 to +150							°C



WEET Technology Company Limited

GLASS PASSIVATED BRIDGE RECTIFIERS

GBPC35005 THUR GBPC3510

RATING AND CHARACTERISTIC CURVES

FIG.1-MAXIMUM FORWARD SURGE CURRENT

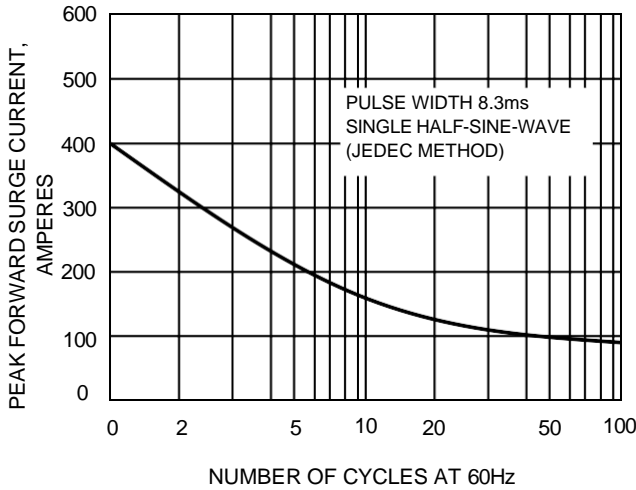


FIG.2- DERATING CURVE OUTPUT RECTIFIED CURRENT

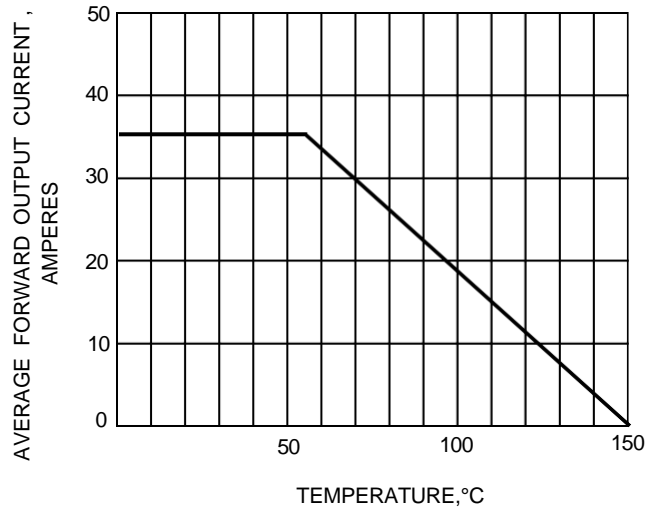


FIG.3-TYPICAL FORWARD CHARACTERISTICS

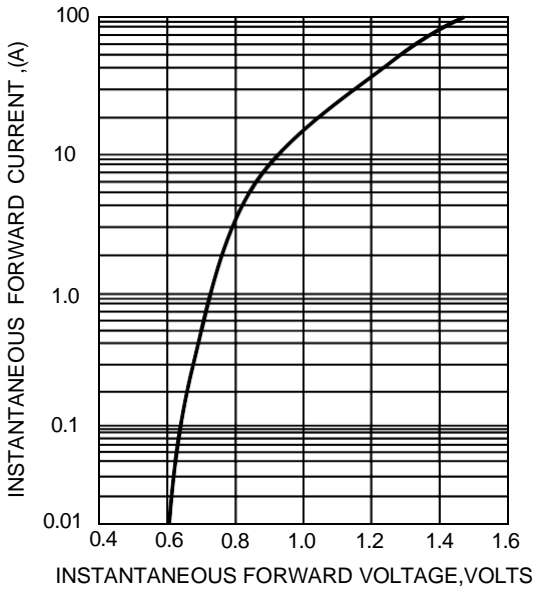


FIG.4-TYPICAL REVERSE CHARACTERISTICS

